



# Managed Network

## MANAGED NETWORK

The simplest, cloud-managed, all-in-one UTM and SD-WAN solutions ideal for large distributed organizations, enterprise and smaller office deployments.

### SD-WAN

With SD-WAN, remote sites are connected over low-cost internet links secured by VPN. It can maximize network resiliency and bandwidth efficiency. It can also ensure optimal performance for mission critical applications and help to avoid disruptions of highly performance-sensitive traffic, such as VoIP.

### AMP

Advanced Malware Protection technology is integrated into our devices to continuously ensure all files coming into the network have been classified as clean, malicious, or unknown.

### CONTENT FILTERING

Content Filtering protects the network from inappropriate or harmful content while maintaining productivity and compliance with applicable business and regulatory requirements.

### COMPREHENSIVE SECURITY

Every Security Appliance supports several features, like a stateful firewall and integrated Sourcefire intrusion prevention (IPS) engine, to keep networks secure. Threat definitions and filter lists are seamlessly updated, ensuring every site has bleeding-edge protection from the latest vulnerabilities and troublesome websites.

### IDS + IPS

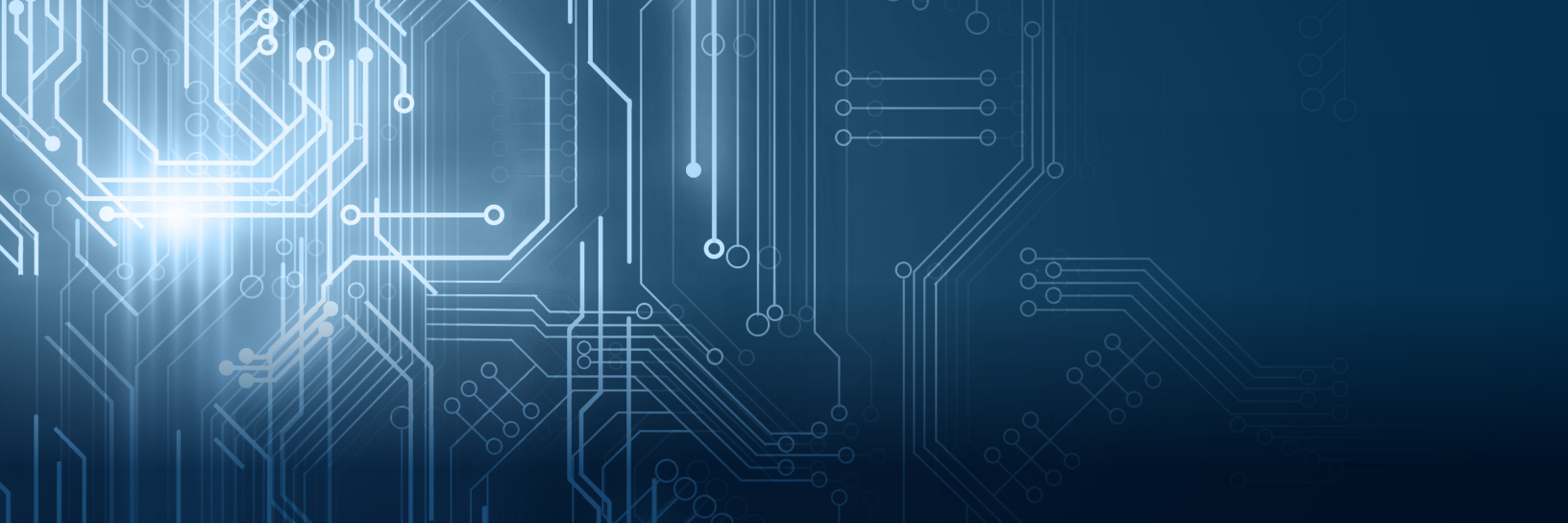
Provides intrusion prevention to protect networks from malicious attacks. Enabling and deploying IDS/IPS only takes 2 clicks on the dashboard. The IPS Security reports provide real-time graphical reporting, allowing you to quickly analyze threats and historical trends.

### AUTO-VPN

Set up your VPN with just 3 clicks. The dashboard features tools which give a real-time view of VPN site performance.

POWERED BY





### **ABOUT SHENTEL**

Headquartered in Edinburg, VA, Shentel was built to serve rural customers with the same world class services available anywhere. Our advance fiber network is built to ensure you keep pace with the ever-changing demands of our networked world. We look forward to partnering with you.

# Robust Feature Set, Yet Easy to Use

### **CUSTOMIZEABLE**

Allows for simple configuration of thousands of devices from a single user friendly interface.

### **ROBUST**

Remote management is intuitive through 100% cloud-managed dashboard, allowing you to save time and money. All appliances are self-provisioning and automatically pull policies and configuration settings from the cloud.

### **SECURE**

Not only does your data stay on your network, but you also have access to content filtering, IDS/IPS, AMP, and iPsec VPN connectivity. You don't need multiple solutions, which reduces complexity.

### **FAULT TOLERANCE**

Redundancy is built in to the Security Appliances: from dual WAN and cellular uplinks to maintain connection to the Internet, to warm spare failover that ensures service integrity, to self-healing site-to-site VPN that keeps branches and public cloud IT services securely connected.